



01

BALLYGAWLEY HEALTH VILLAGE

A U- Shaped arrangement of 4 buildings around an entrance courtyard. The buildings are arranged to take into account the topography of the site.

The accommodation provided is a Health Centre with doctors, day surgery, on the ground floor, on first floor there is Admin, Community Beds, Well-Being Clinic, ESP clinic, Dental Surgery & Retail., Nursing Care Home (80 No. Ensuite Bedrooms) Residential Care Home (80 No. Ensuite Bedrooms) & Nursery. Car parking is 31 surface spaces with 134 parking spaces provided by a basement car park.

The Nursery is the building which marks the entrance to the scheme in the form of an individual pavillion building aligned with the existing adjacent church building. The main public circulation core from the basement carpark arrives at a key position where visitors will be drawn past the main retail elements before entering the Health Centre. A glazed canopy forming a pedestrian walkway will extend from this main entrance along the front of the retail to the Health Centre and continue through to the secondary entrance to the Dental Surgery. The main entrance to the Health Centre is a double height glazed atrium located in the second of a pair of feature gables on the front elevation. Each element of the scheme is identified by its own individual entrance detail

The Retail Units are located on a prominent corner position clearly visible when entering the scheme providing maximum frontage to the entrance/parking courtyard.



02



03

01 Courtyard Perspective view 02 Perspective View - Canopy
03 Site section 04 Site layout



04

LOCATION
Ballygawley

COUNTRY
Northern Ireland

AREA
1,327 ha

TYPOLGY
Health Village

CLIENT
Primacure (NI) Ltd.

ARCHITECTS
Coogan & Co.
Architects Ltd.



01

BANGOR HEALTH VILLAGE

The double height glazed atrium forming the entrance to the Health Centre leads through to the main reception and circulation space, becoming the "Hub" from which other areas can be accessed : MRI/Ultra-sound/CT, Dental Surgery, Well Being Clinic and also through to Minor Injuries/Day Surgery which have their own entrance. As the main public space the Retail unit and Pharmacy have also been located here giving them frontage onto Rathgael Road and to the public space.

A main feature within this space is the semi-circular staircase which wraps around a pair of glazed lifts facing the main entrance lobby. This dramatic stair connects at first floor to form an organic gallery space creating an interesting form when viewed from below. The interior will convey a sense of openness and light with the use of both natural light from the entrance atrium and high quality internal lighting accenting wall and floor surfaces. A combination of high quality materials is proposed such as : Porcelain floor tiles, Polished white/red plaster for walls, Walnut timber partitions. Cherry wall panels to reception and Glass panels with brushed steel detailing.

The other elements of the Health Centre have their own individual reception and waiting areas. These are more intimate in scale but with equal quality in terms of materials and design. These elements include the Day surgery/ Minor Injuries, and Diagnostics, Dental Surgery/Well being Clinic.

The Retail/Cafe ,Nursery and Sports Injury Clinic have been designed as a series of individual pavilion type buildings arranged to provide various points of interest within the scheme. Each is identified by its own feature glazed entrance.

The main entrance to the Health Centre is a double height glazed Atrium marked by a series of tall slim columns supporting a louvred screen at high level. A lower level entrance canopy extends out to provide cover for emergency vehicles. The entrance canopy forms a link with the glazed canopy of the pedestrian walkway running along the front of the Health Centre, connecting to the entrance of the Minor Injuries/Day Surgery. Each element of the scheme is identified by its own individual entrance detail such as: Health Centre Minor Injuries / Day Surgery Nursery Sports Injury clinic Retail/Cafe Nursing Home.

The Retail/Cafe building located in a prominent position marks the entrance to the complex and also encloses and overlooks the central green space. The significant feature of this being a circular glazed corner element forming the cafe. It is proposed that a kids play area will be located adjacent to the cafe .

A secondary main entrance will serve pedestrians from Rathgael Road which opens to a public piazza type space fronting the Retail unit and Pharmacy. The Health Centre can be accessed from both entrance courtyard and main road.



02



03

01 Retail building 02 Detail 03 Elevation

04 View from balcony over retail 05 Health Centre perspective 06 Context Perspective



04



05



06



BANGOR HEALTH VILLAGE

01

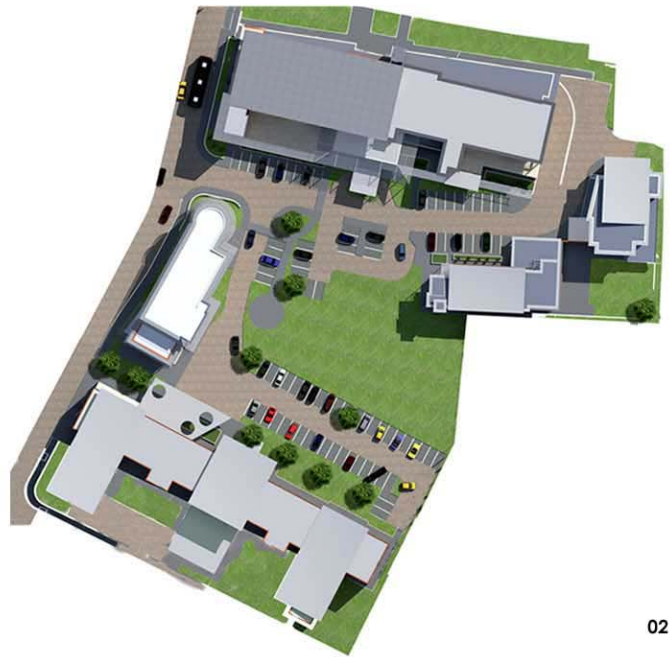
A U - Shaped arrangement of buildings around an entrance courtyard, overlooking a central green space.

Buildings comprise of: Medical Centre Ground Floor: Health Centre, Day Surgery, Minor Injuries, Ultrasound, MRI, CT, Retail & Pharmacy) First Floor: Health Centre Admin, Community Beds, Well-Being Clinic, Dental Surgery Nursing Home (116 Bed) /Day Care Centre, Nursery, Sports Injury Clinic & Retail/Café.

Residential Apartments (47No.) located over Health Centre, Nursery, Sports Injury and Retail with combined car parking provided by surface parking and a basement car park.

The Nursing Home and Day Care Centre are combined in a 3 storey building located adjacent to the Retail/cafe overlooking the central open space. The nursing home is divided over 3 floors comprising of 116 ensuite bedrooms. The Day Care Centre is located on a corner position and shares the ground floor with the Nursing Home. Both share a main entrance lobby and are linked internally. Communal sitting and dining areas both overlook private gardens with bedrooms to the front overlooking.

The central open space. The main entrance canopy supported on an arrangement of circular posts extends across to provide shelter for emergency vehicles. The overall aesthetic and use of materials will reflect that of the Health Centre.



02

01 Perspective view 02 Site layout 03 Aerial Perspective 04 Section



03



04

LOCATION
Bangor

COUNTRY
Northern Ireland

AREA
1.57 ha

TYPOLGY
Health Village

CLIENT
Primacure (NI) Ltd.

ARCHITECTS
Coogan & Co. Architects Ltd.



01



- 01 Perspective view along access road
- 02 Aerial view
- 03 Retail & Pharmacy building
- 04 Site sections

02

DONAGHADEE HEALTH VILLAGE



03

The main entrance to the Health Centre under is under a feature glazed curved wall. This leads through to the main reception, waiting area and circulation space, becoming the "Hub" from which other areas can be accessed: Ultra-sound, Endoscopy, Dental Surgery, Day Surgery.

A main feature within this space is the main circulation staircase which curves behind a pair of feature lifts facing the main entrance lobby. This dramatic stair links to first floor waiting area. A feature atrium roof light above the curved form of the stair will flood the main circulation space with natural light from above. The interior will convey a sense of openness and light with the use of both natural light from the curved glass facade, atrium roof light and high quality internal lighting, accenting walls and floor surfaces. A combination of high quality materials is proposed such as: Porcelain floor tiles, Polished white/red plaster for walls, walnut timber partitions, Cherry wall panels to reception and Glass panels with brushed steel detailing.

The other elements of the Health Centre have their own individual reception and waiting areas. These are more intimate in scale but with equal quality in terms of Materials and Design. These elements include the Day surgery, Endoscopy, Ultra-sound and Dental Surgery.



04



01

DONAGHADEE HEALTH VILLAGE

The Nursery and Retail buildings have been designed as individual pavilion type buildings to provide specific points of interest within the scheme. Each is identified by its own separate feature glazed entrance.

The Nursery will be the first building visitors will see from the access road. The feature stone gable is abutted by a single storey curved glass reception hall, and canopy which is supported on a series of slender columns. This curved facade will direct the visitors attention to the Health Centre.

The main entrance to the Health Centre is a double height glazed atrium identified by the curved glass facade supported on a series of slender columns. A light weight glazed canopy forms the line of the curved facade and marks the entrance to Health Centre.

Each element of the scheme is identified by its own individual entrance detail such as: Health Centre, Nursery, Retail, Care Home.

The Retail building is located in a prominent position within the scheme, enclosing and overlooking the central green space and kids play area. The glazed facade will give maximum visual frontage from each unit to the parking courtyard.

The Care Home and Day Care Centre are combined in a 3 storey T-shaped building adjacent to the retail. The Care Home is divided over 3 floors comprising of 97 ensuite bedrooms. The Day Care Centre is located on a corner position and shares the ground floor with the Care Home. Both share a main entrance lobby and are linked internally. Communal sitting and dining areas both overlook private gardens with bedrooms overlooking the central open space and garden areas. The main entrance is a double height glazed atrium in the form of feature glass box expressed on the main front facade. The overall aesthetic and use of materials will reflect that of the Health Centre.



02

- 01 Site layout
- 02 Elevation detail
- 03 View of Nursery building



03

LOCATION
Donaghadee

COUNTRY
Northern Ireland

AREA
1.297 ha

TYPOLGY
Health Village

CLIENT
Primacare (NI) Ltd.

ARCHITECTS
Coogan & Co.
Architects Ltd.



01



02



03

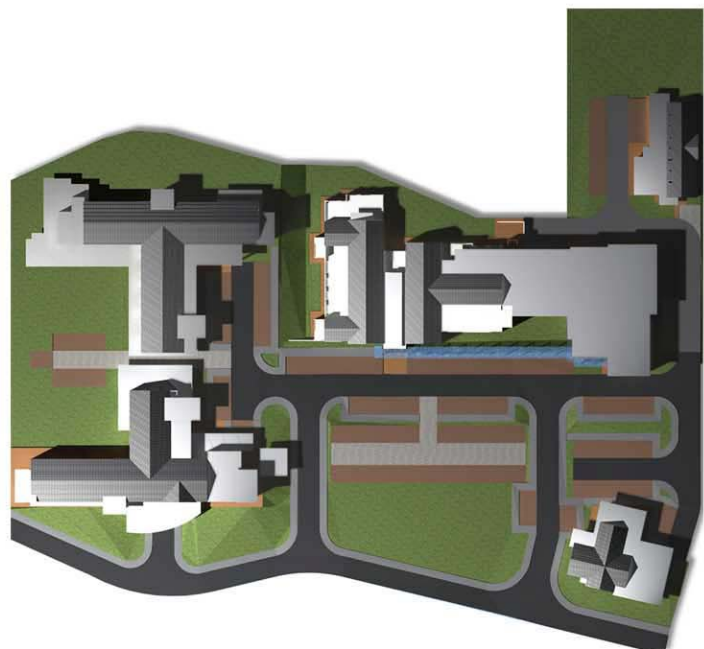


04

BALLYCLARE HEALTH VILLAGE

A U- Shaped arrangement of 5 buildings around an entrance courtyard, overlooking a central green space.

The main entrance to the Health Centre is a double height glazed atrium framed by a pair of symmetrical gables. A glazed canopy forming a pedestrian walkway will extend from the main entrance along the front of the Health Centre. Each element of the scheme is identified by its own individual entrance detail such as : Health Centre, Nursery, ESP Clinic, Retail/Cafe, Apartments, Care homes etc.



05

- 01 Site section
- 02 Nursing Care entrance
- 03 Perspective View
- 04 Perspective
- 05 Site layout

LOCATION
Ballyclare

COUNTRY
Northern Ireland

AREA
2,3 Ha

TPOLOGY
Health Village

CLIENT
Primacure (NI) Ltd.

ARCHITECTS
Coogan & Co.
Architects Ltd.



01

-RETIREMENT VILLAGE BALLYCLARE

A sheltered retirement village of 383 units, a mix of semi-detached townhouses and apartments.

Facilities include : CCTV & video entrance system, lifetime homes design standard (all units), quick response' alarm system linked to Residential Care Home, linked public spaces radiating from Health Village, maximum views to lake, south orientated public space, hidden car parking from main public routes, carparking unable to be used by Health Village users, minimum private gardens, apartments with balconies, access to both Day Centres operated in Health Village

01 Variety of apartments and houses - Perspective Views
02 Site Masterplan



03



01

01 Perspective View 02 Site sections
03 Aerial view



02



03

LOCATION
Ballyclare

COUNTRY
Northern Ireland

AREA
16,34 ha

TYPOLGY
Retirement Village

CLIENT
Primacure (NI) Ltd.

ARCHITECTS
Coogan & Co.
Architects Ltd.



01



02

RATHFRILAND HEALTH VILLAGE

A U-shaped arrangement of buildings around an entrance courtyard overlooking a central landscaped car park with pedestrian access to basement car parking below.

Buildings comprise of: 4 No. GP clinics, Dentistry, Community Beds, Day Surgery, MRI scanner, Sport & Health Education and Admin. Within the retail building there is Pharmacy, Restaurant, Café and Newsagent. Within the nursing home there is 60 Nursing beds & 10 EMI beds.

Altogether 86 no. car parking spaces are provided on the surface and 179 in the basement. The basement is accessed directly from the Health Centre by lift and stair. Access from the surface car park is also via a central lift and stair.

The entrance to the Health Centre is via an impressive curved glass atrium following the line of the curved glass atrium over. The glass atrium acts as the central circulation hub to the building. The four GP practices are located on the ground floor, accessed from the main waiting reception area. Immediately inside the main entrance doors, a feature stair and lift provide access to the upper floors. The backdrop to the main stair and lift is a transparent glass wall of the atrium providing views to the landscape beyond. Once inside the entrance space, users can quickly identify which facilities are located on the ground floor,

On the first floor, whether the stair or lift is used, the user can see Dental Reception left and right, adjacent to MRI Scanner and Sport & Health Education. At second floor level, Day Surgery Reception is located to the left with Community Beds to the right.

The main feature within the entrance reception is the impressive curved glass atrium providing vertical circulation to the building. The floor voids in this area also create interesting spaces when viewed from different floors. The interior is designed to convey a sense of openness and light with the use of both natural light from the entrance atrium and high quality internal lighting. A combination of high quality materials is proposed such as: porcelain floor tiles, polished white/red plaster for walls, walnut timber partitions, cherry wall panels to reception and glass panels with stainless steel detailing.



03



04

01 Elevations 02 Perspective -Nursing Home Entrance 03 Site Plan 04 Aerial Perspective 05 Perspective View - Pharmacy 06 Perspective View - Retail



05



06

LOCATION
Rathfriland

COUNTRY
Northern Ireland

AREA
1.258 ha

TYPOLGY
Health Village

CLIENT
Primacure (NI) Ltd.

ARCHITECTS
Coogan & Co.
Architects Ltd.



01



02

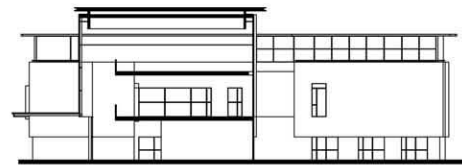
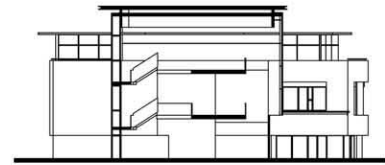
RATHFRILAND HEALTH VILLAGE

The other elements within the Health Centre such as Dental, MRI, Sport & Health Education, Community beds and Day Surgery will have their own individual reception and waiting areas. These are more intimate in scale but with equal quality in terms of materials and design.

The main entrance to the nursing home is clearly indicated by a projecting double height glass box of the communal spaces providing a covered entrance. The Nursing Home, EMI Unit and Daycare Centres are all combined in 1 building over 3 floors. The total number of beds for EMI is 10 with 60 further ensuite beds for Nursing Home. All dining areas and communal areas on the ground floor have the ability to access private garden spaces. Although Daycare and Nursing Home both share same entrance, the foyer and reception area has been designed so to ensure that there is no cross circulation therefore enabling each facility to operate independently with the option of overlap if required.

The retail block is located at the entrance to the site with the Pharmacy positioned in direct line of view adjacent to the Health Centre. The Pharmacy is positioned to have maximum frontage on its prominent corner position. The General retail and Cafe have direct frontage to the central courtyard with News Agency frontage also onto Newry Road. Service access to all of these units is provided from the rear. The first floor can be accessed independently for further retail use.

The service yard for the Health Centre and Daycare and Nursing Home facilities is accessed from the main car park.



03

01 Site section 02 Site section
03 Health Centre sections 04 Perspective View - Nursing Home



04

LOCATION
Rathfriland

COUNTRY
Northern Ireland

AREA
1.258 ha

TYPOLGY
Health Village

CLIENT
Primacure (NI) Ltd.

ARCHITECTS
Coogan & Co.
Architects Ltd.



01



02



03

BALLYSILLAN HEALTH CENTRE

The Buildings comprise, Doctors Surgery at Ground Floor and First Floor, Ground Floor Retail & Dental Surgery at Second Floor.

Car parking is 24 surface spaces with 27 parking spaces provided by a basement car park. The main entrance to the Health Centre is a projecting glazed Atrium with antilevered lightweight glass canopy. Access to the Health Centre is via a ramp or steps from the street level to the raised public piazza which forms the roof of the basement carpark.

A mix of hard + soft landscaping marks an attractive entrance space. The materials present a high quality modern, crisp detailed aesthetic : white render, metallic silver cladding and horizontal timber louvred screens. The Retail/Pharmacy/Restaurant are located on a prominent part of the site, clearly visible from all approaches.

All 51 carparking spaces are to the rear of the site and accessed via the central archway. There is a separate public access from this side.



01 GP Surgery and Dental 02 View from the main road
03 Front elevation 04 Site layout

LOCATION
Ballysillan, Belfast

COUNTRY
Northern Ireland

AREA
0.26 ha

TYPOLGY
Health Centre

CLIENT
Primacure (NI) Ltd.

ARCHITECTS
Coogan & Co.
Architects Ltd.



01

A U-shaped arrangement of buildings around an entrance courtyard overlooking a central landscaped car park with pedestrian access to basement car parking below.

The accommodation provided includes
 Medical Centre: 4 GP clinics, Dentistry, Well Being Clinic, Community Beds, Day Surgery, MRI scanner, CT scanner and Ultrasound Scanning.

Retail: Pharmacy, General retail, Post Office & Café
 Nursing Home: 66 Nursing beds, 24 EMI beds & Sports Injury Clinic (located above Retail)

Altogether 121 no. of car parking spaces are provided on the surface and 210 no. of car parking spaces are provided in the basement. The basement is accessed directly from both the Medical Centre and the retail units by lifts and staircases. Access from the surface carpark is also via a central lift and stair.

The entrance to Health Centre building is via an impressive rotunda into a central hub. The four GP practices in the building are located with 2 on each floor. The ground floor and first floor layout of the GP practices have been designed to have the same layout to make it more user friendly. Immediately inside the main entrance doors there is the option of 2 lifts or an escalator to the upper floors. Immediately inside the entrance doors the user can quickly identify which facilities are located on the ground floor reception areas immediately in front of them. Day Surgery reception area, immediately to the left.

On the first floor, whether the escalator or lift is used, the user can immediately see the reception directly upon exit from lift or the top of escalator. The community beds reception is also visible. At second floor level, Well Being Clinic, MRI, Ultrasound and CT scanner receptions are clearly visible. The Dental Surgery is located adjacent to the Well Being Clinic. The third floor plan provides space similar in footprint to other floors for future use.

The main feature within the entrance reception areas of the rotunda are the lifts and escalators. The floor voids in this area also create interesting spaces when viewed from different floors. The interior is designed to convey a sense of openness and light with the use of both natural light from the entrance atrium and high quality internal lighting. A combination of high quality materials is proposed such as; porcelain floor tiles, polished white/red plaster for walls, walnut timber partitions, cherry wall panels to reception and glass panels with stainless steel detailing.

01 Elevation detail 02 Site layout 03 Site section



02



03

LOCATION
Limavady

COUNTRY
Northern Ireland

AREA
1.75 ha

TPOLOGY
Health Village

CLIENT
Primacare (NI) Ltd.

ARCHITECTS
Coogan & Co. Architects Ltd.



01

The other elements of the Health Centre ie. CT scanner, Well Being, Dental, MRI, Ultra Sounds, Community beds and Day Surgery will have their own individual reception and waiting areas. These are more intimate in scale but with equal quality in terms of materials and design.

The main entrance to Nursing Home is clearly indicated by the projecting bay of the lounge windows providing a covered entrance. The Nursing Home, EMI Unit and Daycare Centres are all combined in 1 building over 3 floors. The total number of beds for EMI is 24 with 70 further beds for Nursing Home. All dining areas and communal areas on the ground floor have the ability to access private garden spaces. Although Daycare and Nursing Home both share same entrance, the foyer and reception area has been designed so to ensure that there is no cross circulation therefore enabling each facility to operate independently with the option of overlap if required.

The retail block is located at the entrance to the site with the Pharmacy positioned to have maximum frontage to the road. Frontage to the central courtyard is provided for the General retail and the Cafe. The Cafe has an external children's play area to the side of the block with maximum overlooking for security. Service access to all of these units is provided from the rear.



02

LIMAVADY HEALTH VILLAGE

01 Health Centre entrance
03 Aerial Perspective View

02 View from access road



03